



JACLO[®]

NEW PRODUCTS

IN MARCH 2023 CATALOG

*Confidence
from start
to finish*



JACLO®

Confidence from start to finish.*

JACLO is your one source manufacturer with a full range of faucets, shower systems, accessories, grab bars, channel drains, decorative specialties®, and the list goes on.

Our list of 100,000+ SKUs are consisting of 35+ finish options that JACLO's American craftsmen have designed to complement every design style. While we are constantly developing new aesthetics and tones, our finishes also blend with most manufacturers' offerings. If you are looking to design your dream bathroom, update a few fixtures to match your current look, or design a large scale hotel, JACLO has the product for you.

JACLO products are finished in New Jersey using some of the most sophisticated processes available. Our state of the art techniques allow us to create unique products that not only meet industry standards, but exceed your design expectations.

FINISHES

NOT ALL FINISHES ARE AVAILABLE ON EVERY PRODUCT. CHECK INDIVIDUAL PRODUCT LISTING FOR FINISH AVAILABILITY. FOR FURTHER INFORMATION VISIT JACLO.COM

Chrome



Polished Chrome
PCH

Group A



Satin Nickel
SN



Polished Nickel
PN



*Unlacquered Brass
ULB

Group B



Matte Black
MBK



Oil-Rubbed Bronze
ORB



Polished Brass
PB



Satin Chrome
SC



Vintage Bronze
VB



White
WH

Group C



Antique Brass
AB



Antique Copper
ACU



*Aged Unlacquered
Brass AUB



Bronze Umber
BU



Caramel Bronze
CB



Graphite
GPH



Pewter
PEW



Satin Brass
SB



Satin Copper
SCU

JACLO=COLOR Group C



Almond
ALD



Amber
AMB



Azure Blue
AZB



Coral
COR



Mint Green
GRN



Stone Gray
GRY



Lilac
LAC



Light Blue
LBL



Limon
LIM



Plum
PLM



Pink
PNK



Red
RED

Group D



Black Nickel
BKN



Polished Copper
PCU



Polished Gold
PG



Satin Gold
SG

*ULB and AUB are living finishes

JACLO finishes chart shown for reference only. Finish samples available upon request.

Additional Finishes



Polished Stainless
Steel PSS



Brushed Stainless
Steel BSS

Brushed Stainless Steel (BSS) and Polished Stainless Steel (PSS) are available finishes on specific product offerings.

NEW PRODUCTS

IN MARCH 2023 CATALOG

JACLO®

Confidence from start to finish.®

LILA FAUCETS

SECTION 1: 1

FAUCET COLLECTIONS, TUB FILLERS
+ BATHROOM ACCESSORIES



5150-T160-

5150-T161- 

ITEM	SPECIFICS	PCH	GRP A	GRP B	GRP C	GRP D
5150-T160-	Cross Handles	\$850	\$995	\$1195	\$1295	\$1395
5150-T161-	Lever Handles	\$850	\$995	\$1195	\$1295	\$1395

- All brass 8" - 12" widespread includes 812 lavatory drain with overflow
- ¼ turn ceramic valves
- Available Flow Rates: 1.5, 1.2 & 0.5 GPM. Additional flow rate (aerator) options available. Contact JACLO.
- 5 5/8" spout reach center to center
- Spout Hole Size Min-Max: 1 1/2" - 1 7/8"
- Valve Hole Size Min-Max: 1 1/8" - 1 5/8"
- For additional drain options refer to lavatory drain section or visit jaclo.com



LILA ROBE HOOK

SECTION 1: 2, SECTION 5: 26



ITEM	PCH	GRP A	GRP B	GRP C	GRP D
5150-RH-	\$75	\$89	\$125	\$145	\$175

- All brass single robe hook
- Universal mounting hardware included
- 2" Projection
- Blocking required for proper installation

LILA TOWEL BARS

SECTION 1: 2, SECTION 5: 26



ITEM	SPECIFICS	PCH	GRP A	GRP B	GRP C	GRP D
5150-TB-24-	24" Towel Bar	\$185	\$235	\$295	\$345	\$375
5150-TB-18-	18" Towel Bar	\$175	\$225	\$285	\$335	\$365

- All brass towel bar
- Universal mounting hardware included
- 3" Projection
- Blocking required for proper installation

NEW PRODUCTS

IN MARCH 2023 CATALOG

JACLO®

Confidence from start to finish.®

FAUCET COLLECTIONS, TUB FILLERS
+ BATHROOM ACCESSORIES

LILA TOILET PAPER HOLDER

SECTION 1: 2, SECTION 5: 26

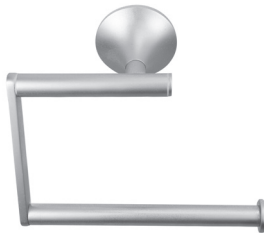


ITEM	PCH	GRP A	GRP B	GRP C	GRP D
5150-STP-	\$115	\$139	\$159	\$179	\$225

- All brass single post toilet paper holder
- Universal mounting hardware included
- 3 1/2" projection
- Can mount vertically or horizontally
- Blocking required for proper installation
- Fits standard toilet tissue roll

LILA TOILET PAPER HOLDER

SECTION 1: 2, SECTION 5: 26



ITEM	PCH	GRP A	GRP B	GRP C	GRP D
5150-LTP	\$145	\$195	\$245	\$275	\$325

- All brass single post toilet paper holder
- Universal mounting hardware included
- 2 1/2" projection
- Blocking required for proper installation
- Fits standard toilet tissue roll

LILA DOUBLE TOILET PAPER HOLDER

SECTION 1: 2, SECTION 5: 26



ITEM	PCH	GRP A	GRP B	GRP C	GRP D
5150-DBTP-	\$145	\$215	\$245	\$275	\$325

- All brass double post toilet paper holder
- Universal mounting hardware included
- 3 1/2" projection
- Blocking required for proper installation
- Fits standard toilet tissue rolls

LILA PIVOTING TOILET PAPER HOLDER

SECTION 1: 2, SECTION 5: 26



Pivoting

ITEM	PCH	GRP A	GRP B	GRP C	GRP D
5150-TPIV-	\$185	\$225	\$285	\$335	\$365

- All brass pivoting toilet paper holder
- Universal mounting hardware included
- 3 1/2" projection
- Blocking required for proper installation
- Fits standard toilet tissue roll

NEW PRODUCTS

IN MARCH 2023 CATALOG

JACLO®

Confidence from start to finish®

LILA SOAP DISH

SECTION 1: 3, SECTION 5: 27



ITEM	PCH	GRP A	GRP B	GRP C	GRP D
5150-SD-	\$135	\$165	\$225	\$275	\$325

- All brass & glass soap dish
- Universal mounting hardware included
- 4 1/2" projection
- Removable 4 5/16" glass dish
- Blocking required for proper installation

FAUCET COLLECTIONS, TUB FILLERS
+ BATHROOM ACCESSORIES

LILA TUMBLER

SECTION 1: 3, SECTION 5: 27



ITEM	PCH	GRP A	GRP B	GRP C	GRP D
5150-TH-	\$135	\$165	\$225	\$275	\$325

- All brass holder with glass tumbler
- Universal mounting hardware included
- Includes glass tumbler
- 4 1/2" Projection
- Blocking required for proper installation

NEW PRODUCTS

IN MARCH 2023 CATALOG

JACLO®

Confidence from start to finish.®

CONTEMPO SLIM UPTOWN FAUCETS ROUND ESCUTCHEON

SECTION 1: 4

FAUCET COLLECTIONS, TUB FILLERS
+ BATHROOM ACCESSORIES



7770-T458- 



7770-T461-



7770-T672-

ITEM	SPECIFICS	PCH	GRP A	GRP B	GRP C	GRP D
7770-T458-	Contempo Slim Lever Handles - Round Escutcheons	\$750	\$845	\$1045	\$1185	\$1385
7770-T461-	Contempo Slim Cross Handles - Round Escutcheons	\$750	\$845	\$1045	\$1185	\$1385
7770-T672-	Contempo/Contempo Slim Thumb Handles - Round Escutcheons	\$750	\$845	\$1045	\$1185	\$1385

- All brass 8" - 12" widespread faucet includes brass pop-up drain with overflow
- ¼ turn ceramic valves
- Available Flow Rates: 1.5, 1.2 & 0.5 GPM. Additional flow rate (aerator) options available. Contact JACLO.
- 5 ¾" spout reach center to center
- Spout Hole Size Min-Max: 1 ½" - 1 7/8"
- Valve Hole Size Min-Max: 1 ⅛" - 1 5/8"
- For additional drain options refer to lavatory drain section or visit jaclo.com



NEW PRODUCTS

IN MARCH 2023 CATALOG

JACLO®


Confidence from start to finish.®

CONTEMPO SLIM UPTOWN FAUCETS SQUARE ESCUTCHEON

SECTION 1: 5

FAUCET COLLECTIONS, TUB FILLS
+ BATHROOM ACCESSORIES



7771-TSQ458- 



7771-TSQ461-



7771-TSQ672-

ITEM	SPECIFICS	PCH	GRP A	GRP B	GRP C	GRP D
7771-TSQ458-	Contempo Slim Lever Handles - Square Escutcheons	\$795	\$895	\$1145	\$1285	\$1495
7771-TSQ461-	Contempo Slim Cross Handles - Square Escutcheons	\$795	\$895	\$1145	\$1285	\$1495
7771-TSQ672-	Contempo/Contempo Slim Thumb Handles - Square Escutcheons	\$795	\$895	\$1145	\$1285	\$1495

- All brass 8" - 12" widespread faucet includes brass pop-up drain with overflow
- ¼ turn ceramic valves
- Available Flow Rates: 1.5, 1.2 & 0.5 GPM. Additional flow rate (aerator) options available. Contact JACLO.
- 5 ¾" spout reach center to center
- Spout Hole Size Min-Max: 1 ½" - 1 7/8"
- Valve Hole Size Min-Max: 1 ⅛" - 1 5/8"
- For additional drain options refer to lavatory drain section or visit jaclo.com



NEW PRODUCTS

IN MARCH 2023 CATALOG

JACLO®


Confidence from start to finish.®

CONTEMPO SLIM DOWNTOWN FAUCETS ROUND ESCUTCHEON

SECTION 1: 6

FAUCET COLLECTIONS, TUB FILLERS
+ BATHROOM ACCESSORIES



7772-T458- 

7772-T461-

7772-T672-

ITEM	SPECIFICS	PCH	GRP A	GRP B	GRP C	GRP D
7772-T458-	Contempo Slim Lever Handles - Round Escutcheons	\$750	\$845	\$1045	\$1185	\$1385
7772-T461-	Contempo Slim Cross Handles - Round Escutcheons	\$750	\$845	\$1045	\$1185	\$1385
7772-T672-	Contempo/Contempo Slim Thumb Handles - Round Escutcheons	\$750	\$845	\$1045	\$1185	\$1385

- All brass 8" - 12" widespread faucet includes brass pop-up drain with overflow
- ¼ turn ceramic valves
- Available Flow Rates: 1.5, 1.2 & 0.5 GPM. Additional flow rate (aerator) options available. Contact JACLO.
- 6 ½" spout reach center to center
- Spout Hole Size Min-Max: 1 ½" - 1 7/8"
- Valve Hole Size Min-Max: 1 ½" - 1 5/8"
- For additional drain options refer to lavatory drain section or visit jaclo.com



NEW PRODUCTS

IN MARCH 2023 CATALOG

JACLO®


Confidence from start to finish®

CONTEMPO SLIM DOWNTOWN FAUCETS SQUARE ESCUTCHEON

SECTION 1: 7

FAUCET COLLECTIONS, TUB FILLERS
+ BATHROOM ACCESSORIES



7773-TSQ458- 



7773-TSQ461-



7773-TSQ672-

ITEM	SPECIFICS	PCH	GRP A	GRP B	GRP C	GRP D
7773-TSQ458-	Contempo Slim Lever Handles - Square Escutcheons	\$795	\$895	\$1145	\$1285	\$1495
7773-TSQ461-	Contempo Slim Cross Handles - Square Escutcheons	\$795	\$895	\$1145	\$1285	\$1495
7773-TSQ672-	Contempo/Contempo Slim Thumb Handles - Square Escutcheons	\$795	\$895	\$1145	\$1285	\$1495

- All brass 8" - 12" widespread faucet includes brass pop-up drain with overflow
- ¼ turn ceramic valves
- Available Flow Rates: 1.5, 1.2 & 0.5 GPM. Additional flow rate (aerator) options available. Contact JACLO.
- 6 ½" spout reach center to center
- Spout Hole Size Min-Max: 1 ½" - 1 7/8"
- Valve Hole Size Min-Max: 1 ½" - 1 5/8"
- For additional drain options refer to lavatory drain section or visit jaclo.com

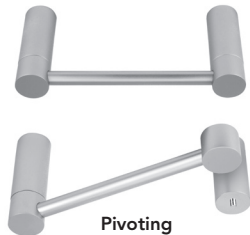


NEW PRODUCTS

IN MARCH 2023 CATALOG

CONTEMPO II PIVOTING TOILET PAPER HOLDER

SECTION 1: 27, SECTION 5: 29

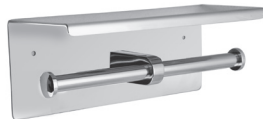


ITEM	SPECIFICS	PCH	GRP A	GRP B	GRP C	GRP D
3501-TPPIV-	Pivot	\$145	\$195	\$245	\$275	\$315

- All brass pivoting toilet paper holder
- Universal mounting hardware included
- 3 3/8" projection
- Fits standard toilet tissue roll
- Blocking required for proper installation

CONTEMPO II DOUBLE TOILET PAPER HOLDER W/ SHELF

SECTION 1: 28, SECTION 5: 30

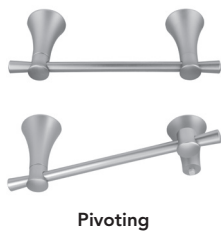


ITEM	SPECIFICS	BSS	PSS	GRP B	GRP C
3501-DBTP-SH-	Double TP w/ shelf	\$225	\$225	\$395	\$455

- All brass double post toilet paper holder
- Universal mounting hardware included
- 3 15/16" Projection
- Blocking required for proper installation
- Fits standard toilet tissue rolls
- Available only in BSS, PSS, MBK, WH, and JACLO=COLOR

CRANFORD PIVOTING TOILET PAPER HOLDER

SECTION 1: 55, SECTION 5: 35

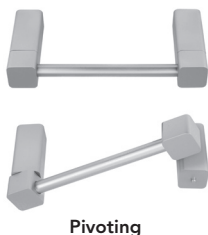


ITEM	PCH	GRP A	GRP B	GRP C	GRP D
4460-TPPIV-	\$135	\$185	\$235	\$265	\$315

- All brass pivoting toilet paper holder
- Universal mounting hardware included
- 3 1/4" projection
- Fits standard toilet tissue roll
- Blocking required for proper installation
- Not available in ULB

CUBIX® II PIVOTING TOILET PAPER HOLDER

SECTION 1: 61, SECTION 5: 38



ITEM	PCH	GRP A	GRP B	GRP C	GRP D
5401-TPPIV-	\$155	\$195	\$255	\$285	\$325

- All brass pivoting toilet paper holder
- Universal mounting hardware included
- 3 3/8" projection
- Blocking required for proper installation
- Fits standard toilet tissue roll
- Not available in BKN, PCU, & PG

NEW PRODUCTS

IN MARCH 2023 CATALOG

JACLO®

Confidence from start to finish.®

HEX SINGLE HOLE FAUCET

SECTION 1: 36, 45, & 63



ITEM	SPECIFICS	PCH	GRP A	GRP B	GRP C	GRP D
9977-	Hex Single Hole Less Drain	\$525	\$675	\$795	\$895	\$985
9977-812-	Hex Single Hole With Drain	\$592	\$780	\$954	\$1110	\$1233

- Single lever faucet
- ADA compliant
- All brass body, ceramic cartridge
- Stationary Spout
- Stainless steel flex supplies included with 3/8" O.D. female ends
- Spout Hole Size Min-Max: 1 3/8" - 1 3/4"
- Available Flow Rates: 1.5, 1.2, & 0.5 GPM. Additional flow rate (aerator) options available. Contact JACLO
- **Drain not included in the 9977, to order with a drain order 9977-812**
- **For additional drain options refer to lavatory drain section or visit jaclo.com**
- **Not available in BKN, PCU, ULB, PG**



FAUCET COLLECTIONS, TUB FILLERS
+ BATHROOM ACCESSORIES

NEW PRODUCTS

IN MARCH 2023 CATALOG

CONTEMPO SINGLE HOLE SENSOR FAUCET

SECTION 1: 15



ITEM	PCH	GRP A	GRP B	GRP C	GRP D
884-ESF-	\$750	\$895	\$1025	\$1150	\$1285

- Contempo lavatory single hole sensor faucet
- 0.5 GPM
- 30 second on/off run time-shutoff
- **Spout reach: 4 ¼", Spout height: 4 ½"**
- Drain sold separately
- All brass stationary spout
- ADA Compliant
- Includes control module, batteries, and AC power adapter
- Battery life 500,000 cycles, also has a low battery indicator
- Requires a separate mixing valve (JACLO's mixing valve: J-TP603)
- For renovations & conversions: Add a 8-CPLATE to 8" widespread faucet or 4-CPLATE for centerset

CONTEMPO SINGLE HOLE SENSOR SOAP OR HAND SANITIZER DISPENSER

SECTION 1: 15



ITEM	PCH	GRP A	GRP B	GRP C	GRP D
984-ESSD-	\$525	\$675	\$795	\$895	\$995

- Contempo lavatory single hole sensor soap dispenser
- Can be used as hand sanitizer dispenser
- **Spout reach: 4 ¾", Spout height: 2 15/16"**
- Infrared sensor
- Use with liquid sanitizer or liquid soap
- Big soap bottle capacity (1000mL)
- ADA compliant
- Includes control module and AC power adapter. Batteries not included
- Battery life 40,000 cycles
- Fast filling function with one press button
- For renovations & conversions: Add a 8-CPLATE to 8" widespread faucet or 4-CPLATE for centerset

MIXING VALVE

SECTION 1: 15 & 17, SECTION 2: 35



ITEM	ROUGH
J-TP603	\$315

- Mixing Valve to be used with Sensor Faucet
- Controls and regulates faucet water temperature
- Minimum flow rate: 0.5 GPM
- Pressure loss at minimum flow rate: 0.5 PSI
- Hot water inlet temperature range: 120-180°F (48.8-82.2°C)
- Cold water inlet temperature range: 39-84°F (3.9-28.8°C)
- Outlet temperature range: 80-120°F (26.7-48.8°C)
- Outlet temperature factory settings: 100.4°F (38°C)
- Inlet/Outlet Spec: ½" NPS threaded male fittings

NEW PRODUCTS

IN MARCH 2023 CATALOG

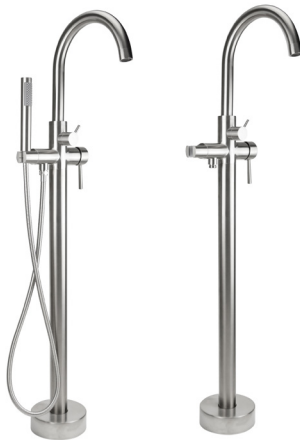
JACLO®

Confidence from start to finish®

FAUCET COLLECTIONS: TUB FILLERS
+ BATHROOM ACCESSORIES

UPTOWN CONTEMPO FREESTANDING TUB FILLER

SECTION 1: 16, SECTION 2: 34



9990-FST-

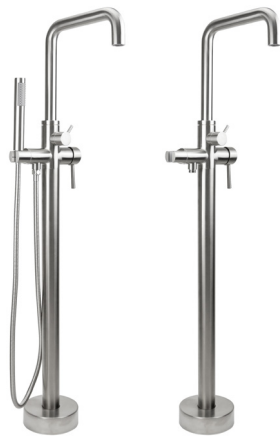
9990-LHHFST-

ITEM	SPECIFICS	PCH	GRP A	GRP B	GRP C	GRP D
9990-FST-	With Handshower & Hose	\$1795	\$2195	\$2995	\$3580	\$3995
9990-LHHFST-	Less Handshower & Hose	\$1635	\$1875	\$2535	\$2960	\$3350

- All brass freestanding tub filler
- 9 5/8" spout reach center to center, 44 1/16" overall height
- Spout and handshower mount both swivel
- High flow ceramic cartridge
- **Flow rate: 14GPM @ 60PSI for tub spout**
- ADA compliant lever handles
- Separate control valve for handshower and tub spout
- 9990-FST- includes: **Handshower (S456), Handshower hose (3060-DS), Stainless steel braided supply hoses, & Tri-pod bracket**
- 9990-LHHFST- includes: **Stainless steel braided supply hoses & Tri-pod bracket**
- 9990-FST- not available in: **BKN, PCU, PG, ULB, WH, & JACLO=COLOR**
- 9990-LHHFST- not available in: **BKN, PCU, PG, ULB**
- Rough-in Part # 9990-FST-BOX-RGH is required for concrete slab or concealed installation ONLY (sold separately)

DOWNTOWN CONTEMPO FREESTANDING TUB FILLER

SECTION 1: 16, SECTION 2: 34



9992-FST-

9992-LHHFST-

ITEM	SPECIFICS	PCH	GRP A	GRP B	GRP C	GRP D
9992-FST-	With Handshower & Hose	\$1795	\$2195	\$2995	\$3580	\$3995
9992-LHHFST-	Less Handshower & Hose	\$1635	\$1875	\$2535	\$2960	\$3350

- All brass freestanding tub filler
- 9 5/8" spout reach center to center, 44 5/16" overall height
- Spout and handshower mount both swivel
- High flow ceramic cartridge
- **Flow rate: 14GPM @ 60PSI for tub spout**
- ADA compliant lever handles
- Separate control valve for handshower and tub spout
- 9992-FST- includes: **Handshower (S456), Handshower hose (3060-DS), Stainless steel braided supply hoses, & Tri-pod bracket**
- 9992-LHHFST- includes: **Stainless steel braided supply hoses & Tri-pod bracket**
- 9992-FST- not available in: **BKN, PCU, PG, ULB, WH, & JACLO=COLOR**
- 9992-LHHFST- not available in: **BKN, PCU, PG, ULB**
- Rough-in Part # 9990-FST-BOX-RGH is required for concrete slab or concealed installation ONLY (sold separately)

ROUGH-IN KIT FOR FREESTANDING TUB FILLERS

SECTION 1: 16, SECTION 2: 34

Leveling plate included for leveling ease



ITEM	ROUGH
9990-FST-BOX-RGH	\$325

- For concrete slab or concealed rough-in installation for 9990-FST-, 9990-LHHFST-, 9992-FST-, and 9992-LHHFST-
- Includes: **Rough-in box, Leveling plate, Mounting hardware, & Inlet pipes**

REPLACEMENT INLET PIPES FOR FREESTANDING TUB FILLERS

SECTION 1: 16, SECTION 2: 34



ITEM	ROUGH
9990-INLET-RGH	\$125

- Replacement inlet pipes for freestanding tub fillers

NEW PRODUCTS

IN MARCH 2023 CATALOG

JACLO®

Confidence from start to finish.®

CONTEMPO WALL TUB FILLER TRIM

SECTION 1: 17, SECTION 2: 35



ITEM	SPECIFICS	PCH	GRP A	GRP B	GRP C	GRP D
8230-T-WT462-TR-	Cross Handles	\$645	\$850	\$1075	\$1150	\$1285
8230-T-WT459-TR-	Lever Handles	\$645	\$850	\$1075	\$1150	\$1285

- Wall Mounted Stationary Tub Spout
- All brass construction
- ¼ turn ceramic valves
- Stationary wall mounted spout
- **Requires rough kit 5550-RGH**

FAUCET COLLECTIONS: TUB FILLERS
+ BATHROOM ACCESSORIES

CONTEMPO WALL FAUCET AND TUB FILLER EXTENSION

SECTION 1: 14 & 17, SECTION 2: 35, SECTION 9: 7



ITEM	PCH	GRP A	GRP B	GRP C	GRP D
5550-EXT-	\$190	\$255	\$295	\$335	\$370

- Contempo Wall Faucet and Tub Filler handle extensions for 5550-RGH
- Extends handles 1"

ROUGH FOR CONTEMPO WALL FAUCET TRIM

SECTION 1: 14 & 17, SECTION 2: 35



ITEM	ROUGH
5550-RGH	\$315

- Required Rough for two handle wall faucet trim
- ½" NPT Hot inlet, ½" NPT Cold inlet
- 8 ⅛" spread
- **Allows up to 13 GPM, when used for tub filler**

NEW PRODUCTS

IN MARCH 2023 CATALOG

JACLO®

Confidence from start to finish®

CONTEMPO UPTOWN ROMAN TUB SET SQUARE ESCUTCHEON TRIM ONLY

SECTION 1: 19



Shown: 9981-SQL-TRIM-
Trim only

ITEM	PCH	GRP A	GRP B	GRP C	GRP D
9981-SQL-TRIM-	\$865	\$975	\$1215	\$1435	\$1655
9981-TSQ632-TRIM-	\$835	\$945	\$1175	\$1385	\$1585
9981-TSQ638-TRIM-	\$865	\$975	\$1215	\$1435	\$1655
9981-TSQ459-TRIM-	\$835	\$945	\$1175	\$1385	\$1585
9981-SQC-TRIM-	\$865	\$975	\$1215	\$1435	\$1655
9981-TSQ630-TRIM-	\$865	\$975	\$1215	\$1435	\$1655
9981-TSQ462-TRIM-	\$835	\$945	\$1175	\$1385	\$1585
9981-TSQ672-TRIM-	\$835	\$945	\$1175	\$1385	\$1585

- All brass roman deck mount tub set trim
- Quick connect/disconnect spout
- Swivel Spout includes full flow aerator
- Spout Hole Size Min-Max: 1 1/8" - 1 3/4"
- Valve Hole Size Min-Max: 1 1/4" - 1 3/8"
- **Requires J-6912 rough in kit**
- **Square escutcheons only**

Handle Options:



SQL ♿

TSQ632 ♿

TSQ638 ♿

TSQ459 ♿

SQC

TSQ630

TSQ462

TSQ672

FAUCET COLLECTIONS, TUB FILTERS
+ BATHROOM ACCESSORIES

NEW PRODUCTS

IN MARCH 2023 CATALOG

CONTEMPO DOWNTOWN ROMAN TUB SET ROUND ESCUTCHEON TRIM ONLY

SECTION 1: 20



Shown: 9982-L-TRIM-
Trim only

ITEM	PCH	GRP A	GRP B	GRP C	GRP D
9982-L-TRIM-	\$835	\$935	\$1175	\$1385	\$1560
9982-T632-TRIM-	\$795	\$885	\$1145	\$1285	\$1535
9982-T638-TRIM-	\$835	\$935	\$1175	\$1385	\$1560
9982-T459-TRIM-	\$795	\$885	\$1145	\$1285	\$1535
9982-C-TRIM-	\$835	\$935	\$1175	\$1385	\$1560
9982-T630-TRIM-	\$835	\$935	\$1175	\$1385	\$1560
9982-T462-TRIM-	\$795	\$885	\$1145	\$1285	\$1535
9982-T672-TRIM-	\$795	\$885	\$1145	\$1285	\$1535

- All brass roman deck mount tub set trim
- Quick connect/disconnect spout
- Swivel Spout includes full flow aerator
- Spout Hole Size Min-Max: 1 1/8" - 1 3/4"
- Valve Hole Size Min-Max: 1 1/4" - 1 3/8"
- **Requires J-6912 rough in kit**
- **Round escutcheons only**

Handle Options:



NEW PRODUCTS

IN MARCH 2023 CATALOG

JACLO®

Confidence from start to finish®

CONTEMPO DOWNTOWN ROMAN TUB SET SQUARE ESCUTCHEON TRIM ONLY

SECTION 1: 21



Shown: 9983-SQL-TRIM-
Trim only

ITEM	PCH	GRP A	GRP B	GRP C	GRP D
9983-SQL-TRIM-	\$865	\$975	\$1215	\$1435	\$1655
9983-TSQ632-TRIM-	\$835	\$945	\$1175	\$1385	\$1585
9983-TSQ638-TRIM-	\$865	\$975	\$1215	\$1435	\$1655
9983-TSQ459-TRIM-	\$835	\$945	\$1175	\$1385	\$1585
9983-SQC-TRIM-	\$865	\$975	\$1215	\$1435	\$1655
9983-TSQ630-TRIM-	\$865	\$975	\$1215	\$1435	\$1655
9983-TSQ462-TRIM-	\$835	\$945	\$1175	\$1385	\$1585
9983-TSQ672-TRIM-	\$835	\$945	\$1175	\$1385	\$1585

- All brass roman deck mount tub set trim
- Quick connect/disconnect spout
- Swivel Spout includes full flow aerator
- Spout Hole Size Min-Max: 1 1/8" - 1 3/4"
- Valve Hole Size Min-Max: 1 1/4" - 1 3/8"
- **Requires J-6912 rough in kit**
- **Square escutcheons only**

Handle Options:



FAUCET COLLECTIONS, TUB FILTERS
+ BATHROOM ACCESSORIES

NEW PRODUCTS

IN MARCH 2023 CATALOG

CONTEMPO UPTOWN ROMAN TUB SET SQUARE ESCUTCHEON TRIM ONLY WITH HANDSHOWER MOUNT

SECTION 1: 23

FAUCET COLLECTIONS, TUB FILTERS
+ BATHROOM ACCESSORIES



Shown: 9981-SQL-A-TRIM

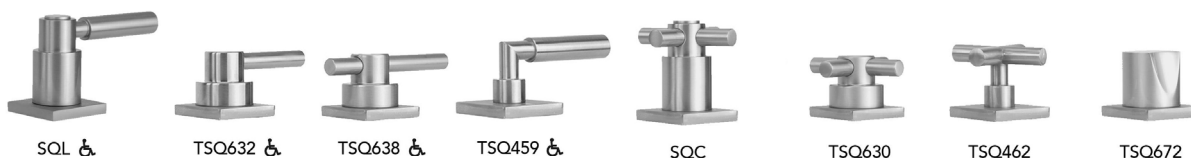


Shown: 9981-SQL-S-TRIM

TEM	PCH	GRP A	GRP B	GRP C	GRP D
9981-SQL-A-TRIM-	\$1265	\$1585	\$2095	\$2325	\$2555
9981-TSQ632-A-TRIM-	\$1245	\$1545	\$2015	\$2295	\$2495
9981-TSQ638-A-TRIM-	\$1265	\$1585	\$2095	\$2325	\$2555
9981-TSQ459-A-TRIM-	\$1245	\$1545	\$2015	\$2295	\$2495
9981-SQC-A-TRIM-	\$1265	\$1585	\$2095	\$2325	\$2555
9981-TSQ630-A-TRIM-	\$1265	\$1585	\$2095	\$2325	\$2555
9981-TSQ462-A-TRIM-	\$1245	\$1545	\$2015	\$2295	\$2495
9981-TSQ672-A-TRIM-	\$1245	\$1545	\$2015	\$2295	\$2495
9981-SQL-S-TRIM-	\$1265	\$1585	\$2095	\$2325	\$2555
9981-TSQ632-S-TRIM-	\$1245	\$1545	\$2015	\$2295	\$2495
9981-TSQ638-S-TRIM-	\$1265	\$1585	\$2095	\$2325	\$2555
9981-TSQ459-S-TRIM-	\$1245	\$1545	\$2015	\$2295	\$2495
9981-SQC-S-TRIM-	\$1265	\$1585	\$2095	\$2325	\$2555
9981-TSQ630-S-TRIM-	\$1265	\$1585	\$2095	\$2325	\$2555
9981-TSQ462-S-TRIM-	\$1245	\$1545	\$2015	\$2295	\$2495
9981-TSQ672-S-TRIM-	\$1245	\$1545	\$2015	\$2295	\$2495

- All brass roman deck mount tub set trim
- Any handshower can be used
- Quick connect/disconnect spout
- Swivel Spout includes full flow aerator
- Includes:
 - 3060-DS hose
 - 8029 angled handshower mount or 8030 straight handshower mount
 - 8019 deck mount sleeve
- **Order handshower separately**
- Spout Hole Size Min-Max: 1 1/8" - 1 3/4"
- Valve Hole Size Min-Max: 1 1/4" - 1 3/8"
- **Requires J-6912-DIV-RGH rough in kit**
- **Square escutcheons only**
- **Not available in WH or JACLO=COLOR**

Handle Options:



NEW PRODUCTS

IN MARCH 2023 CATALOG

JACLO®

Confidence from start to finish®

CONTEMPO DOWNTOWN ROMAN TUB SET ROUND ESCUTCHEON TRIM ONLY WITH HANDSHOWER MOUNT

SECTION 1: 24

FAUCET COLLECTIONS: TUB FILTERS
+ BATHROOM ACCESSORIES



Shown: 9982-L-A-TRIM



Shown: 9982-L-S-TRIM

ITEM	PCH	GRP A	GRP B	GRP C	GRP D
9982-L-A-TRIM-	\$1215	\$1525	\$2045	\$2245	\$2395
9982-T632-A-TRIM-	\$1185	\$1465	\$1945	\$2125	\$2345
9982-T638-A-TRIM-	\$1215	\$1525	\$2045	\$2245	\$2395
9982-T459-A-TRIM-	\$1185	\$1465	\$1945	\$2125	\$2345
9982-C-A-TRIM-	\$1215	\$1525	\$2045	\$2245	\$2395
9982-T630-A-TRIM-	\$1215	\$1525	\$2045	\$2245	\$2395
9982-T462-A-TRIM-	\$1185	\$1465	\$1945	\$2125	\$2345
9982-T672-A-TRIM-	\$1185	\$1465	\$1945	\$2125	\$2345
9982-L-S-TRIM-	\$1215	\$1525	\$2045	\$2245	\$2395
9982-T632-S-TRIM-	\$1185	\$1465	\$1945	\$2125	\$2345
9982-T638-S-TRIM-	\$1215	\$1525	\$2045	\$2245	\$2395
9982-T459-S-TRIM-	\$1185	\$1465	\$1945	\$2125	\$2345
9982-C-S-TRIM-	\$1215	\$1525	\$2045	\$2245	\$2395
9982-T630-S-TRIM-	\$1215	\$1525	\$2045	\$2245	\$2395
9982-T462-S-TRIM-	\$1185	\$1465	\$1945	\$2125	\$2345
9982-T672-S-TRIM-	\$1185	\$1465	\$1945	\$2125	\$2345

- All brass roman deck mount tub set trim
- Any handshower can be used
- Quick connect/disconnect spout
- Swivel Spout includes full flow aerator
- Includes:
 - 3060-DS hose
 - 8029 angled handshower mount or 8030 straight handshower mount
 - 8019 deck mount sleeve
- **Order handshower separately**
- Spout Hole Size Min-Max: 1 1/8" - 1 3/4"
- Valve Hole Size Min-Max: 1 1/4" - 1 3/8"
- **Requires J-6912-DIV-RGH rough in kit**
- **Round escutcheons only**
- **Not available in WH or JACLO=COLOR**

Handle Options:



NEW PRODUCTS

IN MARCH 2023 CATALOG

JACLO®

Confidence from start to finish®

CONTEMPO DOWNTOWN ROMAN TUB SET SQUARE ESCUTCHEON TRIM ONLY WITH HANDSHOWER MOUNT

SECTION 1: 25

FAUCET COLLECTIONS: TUB FILTERS
+ BATHROOM ACCESSORIES



Shown: 9983-SQL-A-TRIM



Shown: 9983-SQL-S-TRIM

ITEM	PCH	GRP A	GRP B	GRP C	GRP D
9983-SQL-A-TRIM-	\$1265	\$1585	\$2095	\$2325	\$2555
9983-TSQ632-A-TRIM-	\$1245	\$1545	\$2015	\$2295	\$2495
9983-TSQ638-A-TRIM-	\$1265	\$1585	\$2095	\$2325	\$2555
9983-TSQ459-A-TRIM-	\$1245	\$1545	\$2015	\$2295	\$2495
9983-SQC-A-TRIM-	\$1265	\$1585	\$2095	\$2325	\$2555
9983-TSQ630-A-TRIM-	\$1265	\$1585	\$2095	\$2325	\$2555
9983-TSQ462-A-TRIM-	\$1245	\$1545	\$2015	\$2295	\$2495
9983-TSQ672-A-TRIM-	\$1245	\$1545	\$2015	\$2295	\$2495
9983-SQL-S-TRIM-	\$1265	\$1585	\$2095	\$2325	\$2555
9983-TSQ632-S-TRIM-	\$1245	\$1545	\$2015	\$2295	\$2495
9983-TSQ638-S-TRIM-	\$1265	\$1585	\$2095	\$2325	\$2555
9983-TSQ459-S-TRIM-	\$1245	\$1545	\$2015	\$2295	\$2495
9983-SQC-S-TRIM-	\$1265	\$1585	\$2095	\$2325	\$2555
9983-TSQ630-S-TRIM-	\$1265	\$1585	\$2095	\$2325	\$2555
9983-TSQ462-S-TRIM-	\$1245	\$1545	\$2015	\$2295	\$2495
9983-TSQ672-S-TRIM-	\$1245	\$1545	\$2015	\$2295	\$2495

- All brass roman deck mount tub set trim
- Any handshower can be used
- Quick connect/disconnect spout
- Swivel Spout includes full flow aerator
- Includes:
 - 3060-DS hose
 - 8029 angled handshower mount or 8030 straight handshower mount
 - 8019 deck mount sleeve
- **Order handshower separately**
- Spout Hole Size Min-Max: 1 1/8" - 1 3/4"
- Valve Hole Size Min-Max: 1 1/4" - 1 3/8"
- **Requires J-6912-DIV-RGH rough in kit**
- **Square escutcheons only**
- **Not available in WH or JACLO=COLOR**

Handle Options:



SQL ♿

TSQ632 ♿

TSQ638 ♿

TSQ459 ♿

SQC

TSQ630

TSQ462

TSQ672

NEW PRODUCTS

IN MARCH 2023 CATALOG

BRASS TRIM FOR THERMOSTATIC VALVES

SECTION 2: 11



T560-TRIM



T561-TRIM



T361-TRIM



T358-TRIM

TUB & SHOWER VALVES
+ TRIM + TUB SPOUTS

ITEM	COLLECTION	PCH	GRP A	GRP B	GRP C	GRP D
T560-TRIM-	Lila	\$395	\$465	\$595	\$655	\$695
T561-TRIM-	Lila	\$395	\$465	\$595	\$655	\$695
T361-TRIM-	Contempo Slim - No Hub on handle base	\$325	\$375	\$495	\$545	\$585
T358-TRIM-	Contempo Slim	\$325	\$375	\$495	\$545	\$585

- All brass trim
- Trim contains temperature indicator in Fahrenheit so user can set water to desired temperature with no need to adjust further
- Lever trim is ADA compliant
- **Requires rough valve J-TH34 or J-TH12**
- For clear visual of Cross handles with hub/no hub on T361-TRIM & T562-TRIM see corresponding Volume Control Trim section or view the spec found at JACLO.com

NEW PRODUCTS

IN MARCH 2023 CATALOG

JACLO®

Confidence from start to finish.®

BRASS TRIM FOR VOLUME CONTROL & DIVERTER

SECTION 2: 14, SECTION 2: 15

TUB & SHOWER VALVES
+ TRIM + TUB SPOUTS



T160-TRIM



T161-TRIM



T461-TRIM



T458-TRIM



TSQ461-TRIM



TSQ458-TRIM

ITEM	COLLECTION	PCH	GRP A	GRP B	GRP C	GRP D
T160-TRIM-	Lila	\$205	\$240	\$340	\$370	\$395
T161-TRIM-	Lila	\$205	\$240	\$340	\$370	\$395
T461-TRIM-	Contempo Slim - No Hub on handle base	\$165	\$198	\$275	\$315	\$355
T458-TRIM-	Contempo Slim	\$165	\$198	\$275	\$315	\$355
TSQ461-TRIM-	Contempo Slim - No Hub on handle base	\$175	\$210	\$290	\$325	\$365
TSQ458-TRIM-	Contempo Slim	\$175	\$210	\$290	\$325	\$365

- All brass construction
- When used with Valve J-20686, J-20687, J-20688 or J-20689: Turning the handle turns the water on and off, controls the volume of the water, and diverts the water
- When used with Valve J-20682: Turning the handle controls the volume of the water and diverts the water
- When used with Valve J-VC12 or J-VC34: Turning the handle controls the volume of the water
- **Requires rough valves J-VC34, J-VC12, J-20682, J-20686, J-20688, J-20687, or J-20689**
- Lever trim is ADA compliant

NEW PRODUCTS

IN MARCH 2023 CATALOG

BRASS THERMOSTATIC TRIM W/ BUILT IN 2 WAY & 3 WAY DIVERTER/VOLUME CONTROL W/ SHUT OFF

SECTION 2: 17, SECTION 2: 19 SECTION 2: 20

TUB & SHOWER VALVES
+ TRIM + TUB SPOUTS



T7560-TRIM



T7561-TRIM



T7361-TRIM



T7358-TRIM



T8361-TRIM



T8358-TRIM



T8560-TRIM



T8561-TRIM

ITEM	COLLECTION	PCH	GRP A	GRP B	GRP C	GRP D
T7560-TRIM-	Lila	\$525	\$655	\$795	\$855	\$905
T7561-TRIM-	Lila	\$525	\$655	\$795	\$855	\$905
T7361-TRIM-	Contempo Slim	\$385	\$485	\$655	\$710	\$765
T7358-TRIM-	Contempo Slim	\$385	\$485	\$655	\$710	\$765
T8361-TRIM-	Contempo Slim - No Hub on handle base	\$385	\$485	\$655	\$710	\$765
T8358-TRIM-	Contempo Slim - No Hub on handle base	\$385	\$485	\$655	\$710	\$765
T8560-TRIM-	Lila	\$525	\$655	\$795	\$855	\$905
T8561-TRIM-	Lila	\$525	\$655	\$795	\$855	\$905

- All brass construction
- Bottom Trim handle contains temperature indicator in Fahrenheit so user can set water to desired temperature with no need to adjust further
- Top Trim handle turns the water on and off, controls the volume of the water, and diverts the water
- **Requires rough valve J-TH34-686 for 2 functions, J-TH34-688 for 3 functions, J-TH34-687 for 2 shared functions, or J-TH34-689 for 3 shared functions**
- For clear visual of Cross handles with hub/no hub on T7361-TRIM; T7358-TRIM; T7549-TRIM see corresponding Volume Control Trim section or see spec info on JACLO.com
- Lever trim is ADA compliant

NEW PRODUCTS

IN MARCH 2023 CATALOG

JACLO®

Confidence from start to finish®

BRASS TRIM FOR PRESSURE BALANCE CYCLING VALVES WITH INTEGRAL DIVERTER

SECTION 2: 21

TUB & SHOWER VALVES
+ TRIM + TUB SPOUTS



A852-TRIM



A851-TRIM



A863-TRIM



A858-TRIM



A859-TRIM



A952-TRIM



A951-TRIM



A963-TRIM



A958-TRIM



A959-TRIM



A752-TRIM



A751-TRIM



A758-TRIM



A754-TRIM

A758 INCLUDES BOTH:



PRICING FOR ALL TRIMS ON THIS PAGE

ITEM	PCH	GRP A	GRP B	GRP C	GRP D
TRIM ONLY	\$355	\$485	\$575	\$645	\$685

- All brass construction
- Rotating the handle counter clockwise turns on the water & controls the water temperature
- Built in diverter for diverting between multiple devices (for example, diverting between a showerhead and a handshower)
- **Requires rough valve J-DIV-CSV**
- **All new handles and screw-less plate design**
- **Not available in BKN, PCU, PG**

NEW PRODUCTS

IN MARCH 2023 CATALOG

BRASS TRIM FOR PRESSURE BALANCE CYCLING VALVES

SECTION 2: 22

TUB & SHOWER VALVES
+ TRIM + TUB SPOUTS



A558-TRIM



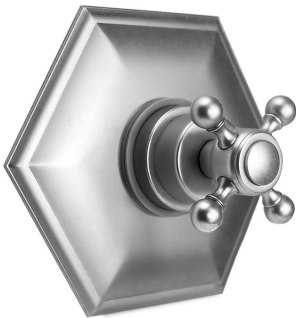
A554-TRIM



A552-TRIM



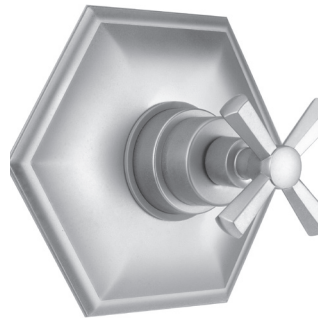
A551-TRIM



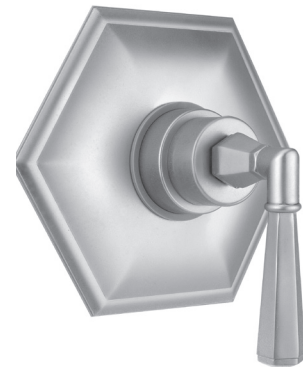
A658-TRIM



A654-TRIM



A652-TRIM



A651-TRIM

A558 & A658
INCLUDES BOTH:



PRICING FOR ALL TRIMS ON THIS PAGE

ITEM	PCH	GRP A	GRP B	GRP C	GRP D
TRIM ONLY	\$289	\$355	\$435	\$489	\$535

- All brass construction
- Rotating the handle counter clockwise turns on the water & controls the water temperature
- **Requires rough valve J-CSV**
- Lever trim is ADA compliant
- **All new handles and screw-less plate design**
- **Not available in BKN, PCU, PG**

NEW PRODUCTS

IN MARCH 2023 CATALOG

JACLO®

Confidence from start to finish.®

BRASS TRIM FOR PRESSURE BALANCE CYCLING VALVES

SECTION 2: 23

TUB & SHOWER VALVES
+ TRIM + TUB SPOUTS



A452-TRIM



A451-TRIM



A463-TRIM



A461-TRIM



A459-TRIM



A252-TRIM



A251-TRIM



A263-TRIM



A261-TRIM



A259-TRIM

PRICING FOR ALL TRIMS ON THIS PAGE

ITEM	PCH	GRP A	GRP B	GRP C	GRP D
TRIM ONLY	\$289	\$355	\$435	\$489	\$535

- All brass construction
- Rotating the handle counter clockwise turns on the water & controls the water temperature
- **Requires rough valve J-CSV**
- Lever trim is ADA compliant
- **All new handles and screw-less plate design**
- **Not available in BKN, PCU, PG**

NEW PRODUCTS

IN MARCH 2023 CATALOG

BRASS TRIM FOR PRESSURE BALANCE VALVES

SECTION 2: 25

TUB & SHOWER VALVES
+ TRIM + TUB SPOUTS



ITEM	PCH	GRP A	GRP B	GRP C	GRP D
A585-TRIM-	\$289	\$355	\$435	\$489	\$535

- All brass construction
- Moving lever up and down controls the volume of water and turns water on and off
- Rotating the handle left and right controls the water temperature
- **Requires rough valve J-PBV**
- Lever trim is ADA compliant
- **Not available in BKN, PCU, PG, & ULB**
- **Extension kit NOT AVAILABLE for this rough valve. Please be sure to review install instructions for proper install depth from finished wall.**

ROUND PLATE WITH CONTEMPO ROUND LEVER TRIM FOR COMPACT PRESSURE BALANCE CYCLING VALVE (J-COM-CSV)

SECTION 2: 26, SECTION 4: 11

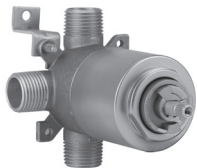


ITEM	SPECIFICS	PCH	GRP A	GRP B	GRP C	GRP D
B426-TRIM-	4 5/16" Diameter	\$289	\$355	\$435	\$489	\$535

- All brass construction
- Rotating the handle counter clockwise turns on the water & controls the water temperature
- **Requires rough valve J-COM-CSV**
- Lever trim is ADA compliant
- Trim plate 4 5/16"

COMPACT PRESSURE BALANCE CYCLING VALVE

SECTION 2: 26, SECTION 4: 11



ITEM	ROUGH
J-COM-CSV	\$255

- All brass body
- Pressure balance valve mixes hot & cold water
- Anti-scald protection
- Rotating the handle counter clockwise turns on the water & controls the water temperature
- Ceramic cartridge
- 1/2" NPT male ports
- 4.75 GPM flow @ 60 PSI
- Extension kit available for deep wall installations, J-CSV-EXT- designate finish
- Ideal for Bidet Handshowers
- **Requires B426-TRIM-**

NEW PRODUCTS

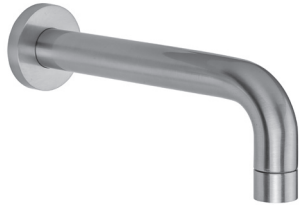
IN MARCH 2023 CATALOG

JACLO®

Confidence from start to finish®

CONTEMPO SLIM TUB SPOUT

SECTION 2: 27

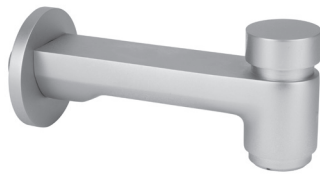


ITEM	SPECIFICS	PCH	GRP A	GRP B	GRP C	GRP D
7230-	8" Reach	\$195	\$245	\$345	\$395	\$445

- All brass tub spout
- ½" female IPS inlet
- 8" reach
- Refer to installation instructions for proper install
- Collection: Contempo Slim
- Custom length spouts available - Contact JACLO

CONTEMPO DIVERTER TUB SPOUT

SECTION 2: 30



ITEM	SPECIFICS	PCH	GRP A	GRP B	GRP C	GRP D
2022-	6 9/16" reach	\$215	\$255	\$355	\$389	\$435

- All brass diverter tub spout
- ½" female IPS inlet
- 6 9/16" reach
- Collection: Contempo/Contempo Slim

CONTEMPO UPTOWN DECK MOUNT TUB SPOUT

SECTION 2: 32



ITEM	PCH	GRP A	GRP B	GRP C	GRP D
9981-SPT-	\$525	\$585	\$725	\$790	\$865

- All brass deck mount tub spout
- Stationary spout
- Complements Uptown Collections
- Full Roman Tub set available
- **Quick connect required (sold separately) Part # 6912-QC-0**

CONTEMPO DOWNTOWN DECK MOUNT TUB SPOUT

SECTION 2: 32



ITEM	PCH	GRP A	GRP B	GRP C	GRP D
9982-SPT-	\$525	\$585	\$725	\$790	\$865

- All brass deck mount tub spout
- Stationary spout
- Complements Downtown Collections
- Full Roman Tub set available
- **Quick connect required (sold separately) Part # 6912-QC-0**

CONTEMPO DOWNTOWN DECK MOUNT TUB SPOUT

SECTION 2: 32



ITEM	PCH	GRP A	GRP B	GRP C	GRP D
9983-SPT-	\$525	\$585	\$725	\$790	\$865

- All brass deck mount tub spout
- Stationary spout
- Complements Downtown Collections
- Full Roman Tub set available
- **Quick connect required (sold separately) Part # 6912-QC-0**

NEW PRODUCTS

IN MARCH 2023 CATALOG

Standard flow rate is 2.5 GPM
 *Alternate available flow rates: 1.5, 1.75, 2.0 GPM
 Example: To order a 1.75 GPM showerhead, add -1.75 to part #. Part # will become: S206-1.75-SN

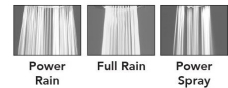
KIERA SHOWERHEAD WITH POWER SPRAY

SECTION 3: 12



ITEM	SPECIFICS	PCH	GRP A	GRP B	GRP C	GRP D
S182-	4" Face	\$185	\$285	\$355	\$425	\$490

- 3 function showerhead with 4" face
- ½" IPS adjustable brass ball joint to adjust angle of showerhead
- Available flow rates: 2.5, 2.0, 1.75 & 1.5 GPM
- **Not available in AUB, ULB, WH, JACLO=COLOR**



SHOWERHEADS, ARMS, NIPPLES, ESCUTCHEONS + SUBWAY LINE

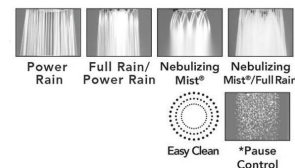
SONIA SHOWERALL® SHOWERHEAD

SECTION 3: 13



ITEM	SPECIFICS	PCH	GRP A	GRP B	GRP C	GRP D
S167-	4 ¾" Face	\$105	\$155	\$260	\$295	\$345

- 4 ¾" diameter 6 function showerhead with pause control to conserve water
- Pause control is not a positive shut-off, must drip per plumbing code
- Fully finished face
- ½" IPS adjustable brass ball joint to adjust angle of showerhead
- Available flow rates: 2.5, 2.0, 1.75 & 1.5 GPM
- **Not available in AUB, ULB, WH, JACLO=COLOR**
- **1.75 GPM - WaterSense approved**



SINGLE FUNCTION SHOWERHEAD

SECTION 3: 14



ITEM	SPECIFICS	PCH
S121-1.75-	2 ½" Face	\$29

- Single function showerhead with 2 ½" face
- ½" IPS adjustable brass ball joint to adjust angle of showerhead
- Economical
- **1.75 GPM only**
- **Available in PCH only**



OVERSIZED BRASS FLAT ESCUTCHEON

SECTION 3: 15, SECTION 9: 20



ITEM	PCH	GRP A	GRP B	GRP C	GRP D
96-XL-ESC-	\$65	\$125	\$135	\$145	\$155

- 3 ¼" Diameter oversized brass Escutcheon
- Solid brass
- Oversized replacement escutcheon for 9636/9536/9336 wall bars, nebulizing mist body sprays, & massage body sprays

NEW PRODUCTS

IN MARCH 2023 CATALOG

ANGLED/SLOPED ADJUSTABLE CEILING ESCUTCHEON

SECTION 3: 24



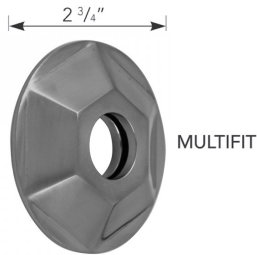
ITEM	PCH	GRP A	GRP B	GRP C	GRP D
6019-	\$250	\$345	\$485	\$585	\$650

- All brass construction
- Works for slope ceilings up to a 45 degree angle
- Works with standard 1/2" drop ceiling nipples - sold separately
- **Patent # 11130145**

PROBLEM SOLVER: This patented invention eliminates the need to have a custom escutcheon made for the exact angle/slope degree of the ceiling *or* the need to build out a 90 degree box which would allow for a standard escutcheon to be used.

HEX ESCUTCHEON

SECTION 3: 25



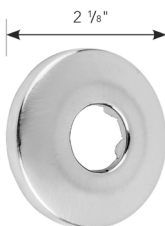
ITEM	SPECIFICS	PCH	GRP A	GRP B	GRP C	GRP D
6017-	2 3/4" Diameter	\$60	\$75	\$115	\$135	\$150

- 2 3/4" Diameter multi fit brass escutcheon
- Supplied with three O-rings to fit:
 - 1/2" IPS wall & ceiling drop nipples
 - 1/2" showerarms
 - Cover tube 579-
 - 629- & 631- series valves
- Decorative design



ESCUTCHEON

SECTION 3: 26



ITEM	SPECIFICS	PCH	GRP A	GRP B	GRP C	GRP D
6080-	2 1/8" Diameter	\$12	\$24	\$49	\$59	\$65

- 2 1/8" Diameter brass escutcheon
- Fits:
 - 1/2" IPS showerarms
- Decorative design
- Sure Grip
- Previous Model #: 8040-ESC

NEW PRODUCTS

IN MARCH 2023 CATALOG

JACLO®

Confidence from start to finish.®

45° BRASS SHOWERARM WITH ESCUTCHEON

SECTION 3: 16



8031-E7 / 8032-E7



8031-E17 / 8032-E17 8031-E80 / 8032-E80

ITEM	SPECIFICS	PCH	GRP A	GRP B	GRP C	GRP D
8031-E7-	1/2" X 6"	\$63	\$89	\$147	\$167	\$192
8032-E7-	1/2" X 8"	\$66	\$94	\$157	\$184	\$215
8031-E17-	1/2" X 6"	\$81	\$109	\$177	\$207	\$232
8032-E17-	1/2" X 8"	\$84	\$114	\$187	\$224	\$247
8031-E80-	1/2" X 6"	\$33	\$58	\$111	\$131	\$147
8032-E80-	1/2" X 8"	\$36	\$63	\$121	\$148	\$170

- Brass 45° showerarms
- 1/2" Male IPS
- Other escutcheons styles and arm length options available. Contact JACLO

60° BRASS SHOWERARM WITH ESCUTCHEON

SECTION 3: 17



8041-E7 / 8043-E7



8041-E17 / 8043-E17 8041-E80 / 8043-E80

ITEM	SPECIFICS	PCH	GRP A	GRP B	GRP C	GRP D
8041-E7-	1/2" X 6"	\$81	\$113	\$180	\$210	\$245
8043-E7-	1/2" X 8"	\$97	\$128	\$223	\$253	\$298
8041-E17-	1/2" X 6"	\$99	\$133	\$210	\$250	\$285
8043-E17-	1/2" X 8"	\$115	\$148	\$253	\$295	\$340
8041-E80-	1/2" X 6"	\$51	\$82	\$144	\$174	\$200
8043-E80-	1/2" X 8"	\$67	\$97	\$187	\$217	\$253

- Brass 60° showerarms
- 1/2" Male IPS
- **60° design allows for more downward angle of showerhead from standard 45°**
- Other escutcheon styles and arm length options available. Contact JACLO
- **Problem Solver** - Excellent for increasing the angle of the showerhead as apposed to using 45° arm

SHOWERHEADS, ARMS, NIPPLES,
ESCUTCHEONS + SUBWAY LINE

NEW PRODUCTS IN MARCH 2023 CATALOG

Standard flow rate is 2.5 GPM
*Alternate available flow rates: 1.5, 1.75, 2.0 GPM
Example: To order a 1.75 GPM showerhead, add -1.75 to part #. Part # will become: S206-1.75-SN

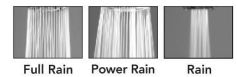
KIERA HANDSHOWER

SECTION 4: 2



ITEM	SPECIFICS	PCH	GRP A	GRP B	GRP C	GRP D
S482-	4" Face	\$195	\$315	\$395	\$435	\$495

- 3 function handshower with 4" face
- ½" IPS male threads
- Tab on adjusting ring allows for easy adjustment of functions
- Contemporary design
- Available flow rates: 2.5, 2.0, 1.75 & 1.5 GPM
- **Not available in AUB, ULB, WH, JACLO=COLOR**



HANDSHOWERS, HOSES, BIDET,
HANDSHOWER ACCESSORIES + SUBWAY LINE

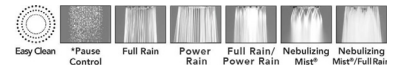
SONIA SHOWERALL® 6 FUNCTION HANDSHOWER

SECTION 4: 4



ITEM	SPECIFICS	PCH	GRP A	GRP B	GRP C	GRP D
S467-	4 ¾" Face	\$98	\$155	\$260	\$295	\$345

- 6 function handshower with **pause control** to conserve water with 4 ¾" face
- ½" IPS male threads
- **Pause control is not a positive shut-off, must drip per plumbing code**
- Fully finished face
- Available flow rates: 2.5, 2.0, 1.75 & 1.5 GPM
- **Not available in AUB, ULB, WH, JACLO=COLOR**
- **1.75 GPM—WaterSense approved**



MACAN BIDET

SECTION 4: 8



ITEM	SPECIFICS	PCH	GRP A	GRP B	GRP C	GRP D
B039-	1 5/16" Face	\$85	\$150	\$225	\$255	\$310

- Power spray bidet handshower with 1 5/16" face
- ½" Male threads
- Light weight ABS design
- Handheld On/off trigger operation
- Note:
 - Separate shut off valve required when installing this item
 - **Water must be turned off when not in use**
- Available Flow Rates: 2.5 & 2.0 GPM
- **Not available in AUB, ULB, WH, JACLO=COLOR**



MACAN BIDET HANDSHOWER KIT

SECTION 4: 9



ITEM	SPECIFICS	PCH	GRP A	GRP B	GRP C	GRP D
B039-646-	Complete Kit	\$450	\$767	\$1045	\$1245	\$1430

- Power spray bidet kit with 1 5/16" face
- ½" Female inlet x ½" Male outlet
- Note:
 - **Water must be turned off when not in use**
 - Kit includes:
 - Bidet handshower P/N B039
 - Water supply elbow with on/off valve and swivel handshower holder P/N 6466
 - Hose P/N 3049-DS
 - Dual check valve back flow preventer P/N DBF
- Available Flow Rates: 2.5 & 2.0
- **Not available in AUB, ULB, WH, JACLO=COLOR**



NEW PRODUCTS

IN MARCH 2023 CATALOG

NYLON REINFORCED HOSE

SECTION 4: 14



ITEM	WH	MBK
3060-NR-	\$74	\$74

- Nylon Reinforced vinyl handshower hose
- ½" Female threads
- Brass hex nut is on one end of the hose, and a plastic conical nut to hold the handshower is on the other end
- Attach handshower to conical end of hose
- **Available in black and white only**

ALL BRASS DELUXE LEVER DIVERTER

SECTION 4: 16



ITEM	SPECIFICS	PCH	GRP A	GRP B	GRP C	GRP D
2698-	Brass	\$54	\$72	\$98	\$125	\$165

- Brass lever showerarm handshower diverter
- ½" Female inlet swivel nut x two ½" Male outlets
- Use to divert water from showerhead to handshower
- Deluxe swivel nut for easy installation
- Includes a shared function setting

LEVER DIVERTER WITH HANDSHOWER HOLDER

SECTION 4: 16



ITEM	SPECIFICS	PCH
2697-	ABS Plastic	\$45

- ABS plastic drop in showerarm handshower diverter
- Use to divert water from showerhead to handshower
- Deluxe swivel nut for easy installation
- Attach to existing showerarm to easily add a handshower creating two shower functions
- Includes shared function setting
- **Available in PCH only**

ALL BRASS HANDSHOWER ANGLE ADAPTER ELBOW

SECTION 4: 18



ITEM	SPECIFICS	PCH	GRP A	GRP B	GRP C	GRP D
8022-	Brass	\$38	\$48	\$79	\$89	\$99

- Brass handshower angle adapter elbow
- ½" Female NPT to attach handshower & ½" male IPS for conical end of handshower hose
- Ideal for close ceiling installation
- Adds a 60 degree angle to your handshower
- **Excellent for increasing the angle of a handshower when desired**

NEW PRODUCTS

IN MARCH 2023 CATALOG

ALL BRASS STATIONARY WALL MOUNT

SECTION 4: 19

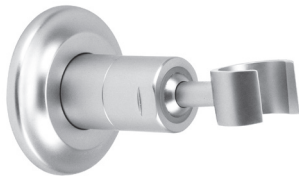


ITEM	SPECIFICS	PCH	GRP A	GRP B	GRP C	GRP D
8054-	Brass Stationary	\$64	\$92	\$125	\$158	\$190

- All Brass Stationary wall mount handshower holder
- Minimalistic design goes well with any styling
- Conical end of hose sits in holder
- Mounting screws & anchors included

ALL BRASS TRANSITIONAL ADJUSTABLE WALL MOUNT

SECTION 4: 20

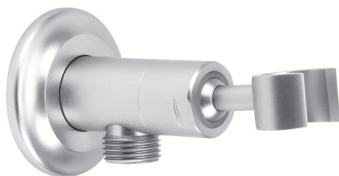


ITEM	SPECIFICS	PCH	GRP A	GRP B	GRP C	GRP D
8059-	Brass Adjustable Angle	\$98	\$130	\$170	\$220	\$290

- Brass adjustable angle wall mount handshower holder
- Ideal for use with any style handshower
- Conical end of hose sits in holder
- Mounting screws & anchors included
- Allows for easy adjustment of handshower to desired angle

ALL BRASS TRANSITIONAL WATER SUPPLY ELBOW WITH HANDSHOWER HOLDER

SECTION 4: 21



ITEM	SPECIFICS	PCH	GRP A	GRP B	GRP C	GRP D
6459-	Brass Adjustable Angle	\$110	\$145	\$180	\$220	\$290

- Brass water supply elbow with brass adjustable angle wall mount handshower holder
- ½" Female inlet x ½" Male outlet
- Conical end of hose sits in holder
- Allows for easy adjustment of handshower to desired angle
- Ideal for use with any style handshower
- Sliding escutcheon for easy installation

ALL BRASS CONTEMPORARY SLIM WALL BAR

SECTION 4: 25



ITEM	SPECIFICS	PCH	GRP A	GRP B	GRP C	GRP D
9224-	7/8" O.D x 35 1/2"	\$199	\$299	\$399	\$439	\$499

- 35 ½" Brass contemporary slim wall bar
- 23 ½" center to center posts
- Adjustable handshower angle
- Lever Handle Slider easily moves up & down & side to side
- Conical end of hose sits in holder
- Mounting hardware included
- **Not available in PG & SG**

NEW PRODUCTS

IN MARCH 2023 CATALOG

JACLO®

Confidence from start to finish®

ALL BRASS SLIDING HANDSHOWER MOUNT ONLY - GRAB BAR SOLD SEPARATELY

SECTION 5: 7 & 15



SRSL61



SRSL60

ITEM	COLLECTION	PCH	GRP A	GRP B	GRP C	GRP D
SRSL61-	Lila	\$195	\$235	\$315	\$365	\$395
SRSL60-	Lila	\$195	\$235	\$315	\$365	\$395

- Sliding handshower mount for all luxury grab bars - **Grab bar sold separately**
- All brass construction, fully polished & plated
- Adjustable tilt of handshower bracket allows for use of handshower at desired angle
- ADA compliant lever handles
- **Slider must be factory installed on grab bar**

GRAB BARS/DOOR PULLS
+ BATHROOM ACCESSORIES

NEW PRODUCTS

IN MARCH 2023 CATALOG

GRAB BAR WITH TRADITIONAL ROUND FLANGE

SECTION 5: 18



ITEM	SPECIFICS	PCH	GRP A	GRP B	GRP C	GRP D
C15-12-	12"	\$350	\$455	\$585	\$655	\$695
C15-16-	16"	\$365	\$475	\$625	\$675	\$735
C15-18-	18"	\$375	\$485	\$635	\$685	\$745
C15-24-	24"	\$395	\$525	\$675	\$725	\$895
C15-32-	32"	\$445	\$595	\$725	\$775	\$925
C15-36-	36"	\$475	\$635	\$795	\$845	\$995

- ADA compliant when properly installed
- Complements Roaring 20's, Westfield, Cranford, & Astor collections
- Covers standard 3" flange on existing stainless steel grab bars
- No need to re-tile in retro-fit applications
- 1 ¼" diameter
- For large quantity custom lengths contact hospitality@jaclo.com
- **Grab bars 24" or longer are NOT AVAILABLE in PG or SG. For large quantity orders, please contact hospitality@jaclo.com**

GRAB BARS/DOOR PULLS
+ BATHROOM ACCESSORIES

GRAB BAR WITH CONTEMPORARY ROUND FLANGE

SECTION 5: 18



ITEM	SPECIFICS	PCH	GRP A	GRP B	GRP C	GRP D
C16-12-	12"	\$350	\$455	\$585	\$655	\$695
C16-16-	16"	\$365	\$475	\$625	\$675	\$735
C16-18-	18"	\$375	\$485	\$635	\$685	\$745
C16-24-	24"	\$395	\$525	\$675	\$725	\$895
C16-32-	32"	\$445	\$595	\$725	\$775	\$925
C16-36-	36"	\$475	\$635	\$795	\$845	\$995

- ADA compliant when properly installed
- Complements Contempo & Astor collections
- Covers standard 3" flange on existing stainless steel grab bars
- No need to re-tile in retro-fit applications
- 1 ¼" diameter
- For large quantity custom lengths contact hospitality@jaclo.com
- **Grab bars 24" or longer are NOT AVAILABLE in PG or SG. For large quantity orders, please contact hospitality@jaclo.com**

NEW PRODUCTS

IN MARCH 2023 CATALOG

GRAB BAR WITH CONTEMPORARY SQUARE/DIAMOND FLANGE

SECTION 5: 19



ITEM	SPECIFICS	PCH	GRP A	GRP B	GRP C	GRP D
C17-12-	12"	\$350	\$455	\$585	\$655	\$695
C17-16-	16"	\$365	\$475	\$625	\$675	\$735
C17-18-	18"	\$375	\$485	\$635	\$685	\$745
C17-24-	24"	\$395	\$525	\$675	\$725	\$895
C17-32-	32"	\$445	\$595	\$725	\$775	\$925
C17-36-	36"	\$475	\$635	\$795	\$845	\$995

- ADA compliant when properly installed
- Complements Cubix®, Astor & Westfield collections
- Covers standard 3" flange on existing stainless steel grab bars
- No need to re-tile in retro-fit applications
- Flange can be mounted in square or diamond position
- 1 ¼" diameter
- For large quantity custom lengths contact hospitality@jaclo.com
- **Grab bars 24" or longer are NOT AVAILABLE in PG or SG. For large quantity orders, please contact hospitality@jaclo.com**

GRAB BARS/DOOR PULLS
+ BATHROOM ACCESSORIES

GRAB BAR WITH CONTEMPORARY HEX FLANGE

SECTION 5: 19



ITEM	SPECIFICS	PCH	GRP A	GRP B	GRP C	GRP D
C19-12-	12"	\$350	\$455	\$585	\$655	\$695
C19-16-	16"	\$365	\$475	\$625	\$675	\$735
C19-18-	18"	\$375	\$485	\$635	\$685	\$745
C19-24-	24"	\$395	\$525	\$675	\$725	\$895
C19-32-	32"	\$445	\$595	\$725	\$775	\$925
C19-36-	36"	\$475	\$635	\$795	\$845	\$995

- ADA compliant when properly installed
- Complements Astor & Westfield collections
- Covers standard 3" flange on existing stainless steel grab bars
- No need to re-tile in retro-fit applications
- 1 ¼" diameter
- For large quantity custom lengths contact hospitality@jaclo.com
- **Grab bars 24" or longer are NOT AVAILABLE in PG or SG. For large quantity orders, please contact hospitality@jaclo.com**

NEW PRODUCTS

IN MARCH 2023 CATALOG

JACLO®

Confidence from start to finish.®

SAFETY ASSIST BAR 1 ¼" - STAINLESS STEEL

SECTION 5: 22

Safety Assist Bar



ITEM	SPECIFICS	BSS	PSS	MBK/WH	COLOR
11412RND-	1 ¼" O.D x 12"	\$89	\$105	\$225	\$265
11418RND-	1 ¼" O.D x 18"	\$95	\$115	\$285	\$325
11424RND-	1 ¼" O.D x 24"	\$120	\$140	\$295	\$345
11432RND-	1 ¼" O.D x 32"	\$140	\$160	\$345	\$395
11436RND-	1 ¼" O.D x 36"	\$150	\$175	\$385	\$445
11442RND-	1 ¼" O.D x 42"	\$170	\$189	\$415	\$475
11448RND-	1 ¼" O.D x 48"	\$180	\$195	\$485	\$565

- Contemporary Stainless Steel safety assist bar
- Concealed Screws
- 1 ¼" Diameter
- Individually bagged with 6 stainless steel screws
- **Available ONLY in BSS, PSS, MBK, WH, & JACLO=Color**
- Standard & custom finishes are available for large projects.
Contact hospitality@jaclo.com for pricing & availability

GRAB BARS/DOOR PULLS
+ BATHROOM ACCESSORIES

NEW PRODUCTS

IN MARCH 2023 CATALOG

TOILET TANK TRIP LEVER TO FIT TOTO

SECTION 6: 5



ITEM	SPECIFICS	PCH	GRP A	GRP B	GRP C	GRP D
908-	Side Mount	\$32	\$58	\$82	\$105	\$145

- Toilet tank "trip" lever to fit TOTO model: THU808
- Brass arm
- **Fits TOTO Models: Drake 2-piece, Drake II, Vespin II, Ultramax, Ultimate, Ultramax II, Carlyle II, Supreme II, Carolina II**
- **Not available in ULB**

TOILET TANK TRIP LEVER TO FIT TOTO

SECTION 6: 5



ITEM	SPECIFICS	PCH	GRP A	GRP B	GRP C	GRP D
9312-	Side Mount	\$49	\$95	\$135	\$185	\$230

- Toilet tank "trip" lever to fit TOTO model: THU312 & THU312N
- Brass arm
- **Fits TOTO Models: Legato**

TOILET TANK TRIP LEVER TO FIT TOTO

SECTION 6: 5



ITEM	SPECIFICS	PCH	GRP A	GRP B	GRP C	GRP D
9313-	Side Mount	\$59	\$110	\$150	\$195	\$235

- Toilet tank "trip" lever to fit TOTO model: THU311 & THU311N
- Brass arm
- **Fits TOTO Models: Aimes**

TOILET TANK TRIP LEVER TO FIT TOTO 1G & DUAL FLUSH LEVER

SECTION 6: 5



ITEM	SPECIFICS	PCH	GRP A	GRP B	GRP C	GRP D
9390-	Side Mount	\$43	\$74	\$135	\$175	\$225

- Toilet tank "trip" lever to fit TOTO model: THU390, THU416, THU466, THU485, THU773, THU806
- Brass handle
- **Fits TOTO Models: Connelly 1G, Promenade II 1G, Carlyle II 1G, Nexus 1G, Vespin II 1G, Drake II 1G, Aqua IV Cube, Aqua IV Arc, Ultramax II 1G, and fits all TOTO side mount lever Dual Flush**

NEW PRODUCTS

IN MARCH 2023 CATALOG

JACLO®

Confidence from start to finish®

DECORATIVE SPECIALTIES®

TOILET TANK TRIP LEVER TO FIT TOTO 1G & DUAL FLUSH LEVER

SECTION 6: 6



ITEM	SPECIFICS	PCH	GRP A	GRP B	GRP C	GRP D
9391-	Side Mount	\$46	\$79	\$140	\$180	\$235

- Toilet tank "trip" lever to fit TOTO model: THU390, THU416, THU466, THU485, THU733, THU806
- Brass handle
- **Fits TOTO Models: Connelly 1G, Promenade II 1G, Carlyle II 1G, Nexus 1G, Vespin II 1G, Drake II 1G, Aqua IV Cube, Aqua IV Arc, Ultramax II 1G, and fits all TOTO side mount lever Dual Flush**

TOILET TANK TRIP LEVER TO FIT TOTO

SECTION 6: 6



ITEM	SPECIFICS	PCH	GRP A	GRP B	GRP C	GRP D
9398-	Side Mount	\$68	\$89	\$155	\$195	\$245

- Toilet tank "trip" lever to fit TOTO model: THU398
- Brass arm & handle
- **Fits TOTO Models: Eco Drake Transitional & Drake Transitional**

TOILET TANK TRIP LEVER TO FIT TOTO

SECTION 6: 8



ITEM	SPECIFICS	PCH	GRP A	GRP B	GRP C	GRP D
9750-	Side Mount	\$68	\$89	\$124	\$172	\$198

- Toilet tank "trip" lever to fit TOTO model: THU750
- Brass arm & handle
- **Fits TOTO Models: Eco Nexus, Nexus**

TOILET TANK TRIP LEVER TO FIT KOHLER

SECTION 6: 14



ITEM	SPECIFICS	PCH	GRP A	GRP B	GRP C	GRP D
9381-	Side Mount	\$39	\$82	\$98	\$135	\$185

- Toilet tank "trip" lever to fit Kohler model: K-3950, K-3981, & K-9375
- Brass arm, spud & handle
- **Fits Kohler Model: Tresham**
- **Not available in ULB**

TOILET TANK TRIP LEVER TO FIT KOHLER

SECTION 6: 14



ITEM	SPECIFICS	PCH	GRP A	GRP B	GRP C	GRP D
9120-	Side Mount	\$39	\$82	\$98	\$135	\$185

- Toilet tank "trip" lever to replace Kohler trip lever K1292297 / K20120-L
- Left handed placement
- Metal arm
- **Fits Kohler Model: Corbelle**

TOILET TANK TRIP LEVER TO FIT KOHLER

SECTION 6: 14



ITEM	SPECIFICS	PCH	GRP A	GRP B	GRP C	GRP D
9131-	Side Mount	\$39	\$82	\$98	\$135	\$185

- Replacement for Kohler K-9131 and K-3324
- Brass arm, spud and handle
- **Fits Kohler Model: Kathryn**
- **Not available in ULB**

NEW PRODUCTS

IN MARCH 2023 CATALOG

JACLO®

Confidence from start to finish®

DECORATIVE SPECIALTIES®

TOILET TANK TRIP LEVER TO FIT GERBER

SECTION 6: 20

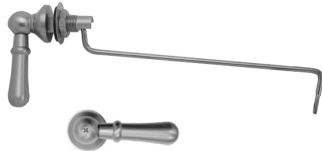


ITEM	SPECIFICS	PCH	GRP A	GRP B	GRP C	GRP D
969-	Side Mount	\$32	\$58	\$82	\$105	\$145

- Toilet tank "trip" lever to fit Gerber models: GOO28181, GHE28582, GHE28530, GAH28890, GOO21221, GOO28186, GWS28890, GWS28897, GOO21021, GOO21187C, GOO228197
- Brass arm
- **Fits Gerber Models: Allerton, Avalanche, Avalanche Elite, Burr Ridge, Hinsdale, Logan Square, Wicker Park 1 pc, Wicker Park 2 pc, & Lemora**
- **Not available in ULB**

TOILET TANK TRIP LEVER TO FIT AXENT

SECTION 6: 21

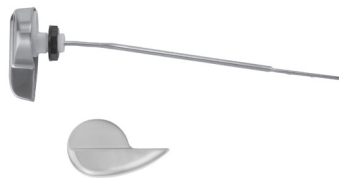


ITEM	SPECIFICS	PCH	GRP A	GRP B	GRP C	GRP D
9142-	Side Mount	\$76	\$125	\$155	\$175	\$250

- Toilet tank "trip" lever to fit Axent
- Brass arm & handle
- **Fits Axent Model: Italica**

TOILET TANK TRIP LEVER TO FIT CROSSWATER

SECTION 6: 21



ITEM	SPECIFICS	PCH	GRP A	GRP B	GRP C	GRP D
906-	Side Mount	\$32	\$58	\$82	\$105	\$145

- Toilet tank "trip" lever to fit Crosswater
- Brass arm
- **Fits Crosswater Model: Heir**
- **Not available in ULB**

TOILET TANK TRIP LEVER TO FIT CROSSWATER

SECTION 6: 21



ITEM	SPECIFICS	PCH	GRP A	GRP B	GRP C	GRP D
967-	Side Mount	\$32	\$58	\$82	\$105	\$145

- Toilet tank "trip" lever to fit Crosswater
- Brass arm
- **Fits Crosswater Model: M-Pro 2 pc**
- **Not available in ULB**

NEW PRODUCTS

IN MARCH 2023 CATALOG

ESCUTCHEON TO HIDE EXPOSED 1/2" COPPER WHEN USING COMPRESSION TYPE VALVE

SECTION 6: 24, 26, 29, 30, 31, 32, & 57



7118-

ITEM	SPECIFICS	PCH	GRP A	GRP B	GRP C	GRP D
7118-	1/16" I.D. Contempo Escutcheon	\$24	\$34	\$58	\$70	\$90

- 7116 or 7118 1/16" I.D. bell escutcheons for use with 579- or sweat valves

For additional cover tubes & escutcheons see 6007, 6015 or Sure Grip escutcheons & accessories section

ANGLE PATTERN IPS X O.D. COMPRESSION FIT

SECTION 6: 27



314-X



314-L

ITEM	SPECIFICS	PCH	GRP A	GRP B	GRP C	GRP D
314-X-	1/2" IPS x 3/8" O.D.	\$110	\$160	\$235	\$335	\$365
314-L-	1/2" IPS x 3/8" O.D..	\$98	\$145	\$225	\$295	\$340

- Angle pattern IPS x 3/8" O.D. 1/4 turn ceramic disc cartridge
- 1/2" IPS inlet x 3/8" O.D. outlet
- All brass body

For additional escutcheons see 6007, 6015, 7118 or Sure Grip escutcheons & accessories section



6015-MULTI FIT



6007-MULTI FIT

STRAIGHT PATTERN IPS X O.D. COMPRESSION FIT

SECTION 6: 28



315-X



315-L

ITEM	SPECIFICS	PCH	GRP A	GRP B	GRP C	GRP D
315-X-	1/2" IPS x 3/8" O.D.	\$120	\$170	\$295	\$345	\$375
315-L-	1/2" IPS x 3/8" O.D.	\$108	\$155	\$235	\$305	\$350

- Straight pattern IPS 3/8" O.D. 1/4 turn ceramic disc cartridge
- 1/2" IPS inlet x 3/8" O.D. outlet
- All brass body

For additional escutcheons see 6007, 6015, 7118 or Sure Grip escutcheons & accessories section



6015-MULTI FIT



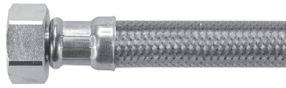
6007-MULTI FIT

NEW PRODUCTS

IN MARCH 2023 CATALOG

JACLOFLEX™ CLEAR - STAINLESS STEEL BRAIDED FAUCET SUPPLY LINES W/ METAL NUTS

SECTION 6: 34



ITEM	SPECIFICS	STAINLESS
130-SS-CLR	3/8" O.D. x 12"	\$14
132-SS-CLR	3/8" O.D. x 16"	\$16
136-SS-CLR	3/8" O.D. x 20"	\$18
137-SS-CLR	3/8" O.D. x 30"	\$20
138-SS-CLR	3/8" O.D. x 36"	\$22
177-SS-CLR	3/8" O.D. x 20" (Extension)	\$20

- **Flexible clear protective cover over braided stainless steel**
- Offers added protection against most cleaning products
- Chrome plated Brass nuts
- 3/8" O.D. Female x 1/2" Female IPS
- For use with 3/8" supply valves
- Quick & easy labor saving installation, perfect for confined spaces

JACLOFLEX™ CLEAR - STAINLESS STEEL BRAIDED TOILET SUPPLY LINES W/ PLASTIC NUT

SECTION 6: 35



ITEM	SPECIFICS	STAINLESS
156-SS-CLR	3/8" O.D. x 12"	\$14
157-SS-CLR	3/8" O.D. x 20"	\$18

- **Flexible clear protective cover over braided stainless steel**
- Offers added protection against most cleaning products
- Plastic nut to toilet, chrome plated brass nut to supply valve
- 3/8" O.D. Female x 7/8" I.D. Female
- For use with 3/8" supply valves
- Quick & easy labor saving installation, perfect for confined spaces

JACLOFLEX™ CLEAR - STAINLESS STEEL BRAIDED TOILET SUPPLY LINES W/ ALL BRASS NUTS

SECTION 6: 35



ITEM	SPECIFICS	STAINLESS
156-MN-SS-CLR	3/8" O.D. x 12"	\$16
152-MN-SS-CLR	3/8" O.D. x 16"	\$18
157-MN-SS-CLR	3/8" O.D. x 20"	\$20

- **Flexible clear protective cover over braided stainless steel**
- Offers added protection against most cleaning products
- Chrome plated brass nuts
- 3/8" O.D. Female x 7/8" I.D. Female
- For use with 3/8" supply valves
- Quick & easy labor saving installation, perfect for confined spaces

NEW PRODUCTS

IN MARCH 2023 CATALOG

JACLO®

Confidence from start to finish.®

DECORATIVE SPECIALTIES®

FAUCET SUPPLY KITS – 1/2" IPS X 3/8" O.D. COMPRESSION FIT VALVE KITS

SECTION 6: 47

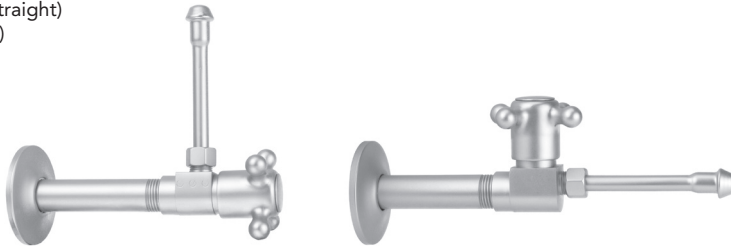
Each Kit Contains:

- (2) Valves (Angle or Straight)
- (2) Supply Tubes (20")
- (2) Escutcheons
- (2) 4" Nipples

How to Order:

Choose:

- Valve style
- Handle style



HANDLE STYLE OPTIONS:
(ANGLE PATTERN SHOWN)



CROSS
-X



LEVER
-L

- All kit components are available separately

ITEM	INLET SIZE	VALVE STYLE	HANDLE STYLE	SUPPLY TUBE LENGTH	ESCUTCHEON	PCH	GRP A	GRP B	GRP C	GRP D
314-X-62-	1/2" IPS x 3/8"	Angle	Cross	20"	2 1/2" Sure Grip	\$364	\$516	\$740	\$1054	\$1216
314-L-62-	1/2" IPS x 3/8"	Angle	Lever	20"	2 1/2" Sure Grip	\$340	\$486	\$720	\$974	\$1166
315-X-62-	1/2" IPS x 3/8"	Straight	Cross	20"	2 1/2" Sure Grip	\$384	\$536	\$860	\$1074	\$1236
315-L-62-	1/2" IPS x 3/8"	Straight	Lever	20"	2 1/2" Sure Grip	\$360	\$506	\$740	\$994	\$1186

TOILET SUPPLY KITS – 1/2" IPS X 3/8" O.D. COMPRESSION FIT VALVE KITS

SECTION 6: 49

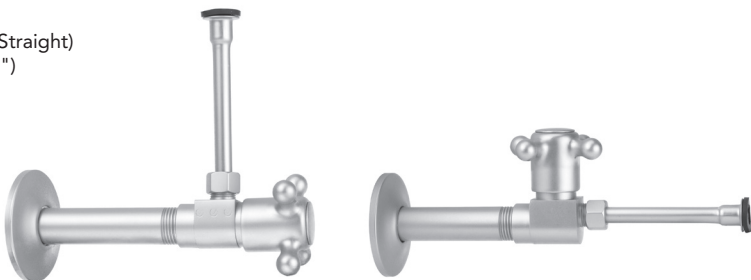
Each Kit Contains:

- (1) Valve (Angle or Straight)
- (1) Supply Tube (20")
- (1) Escutcheon
- (1) 4" Nipple

How to Order:

Choose:

- Valve style
- Handle style



HANDLE STYLE OPTIONS:
(ANGLE PATTERN SHOWN)



CROSS
-X



LEVER
-L

- All kit components are available separately

ITEM	INLET SIZE	VALVE STYLE	HANDLE STYLE	SUPPLY TUBE LENGTH	ESCUTCHEON	PCH	GRP A	GRP B	GRP C	GRP D
314-X-72-	1/2" IPS x 3/8"	Angle	Cross	20"	2 1/2" Sure Grip	\$187	\$269	\$380	\$527	\$620
314-L-72-	1/2" IPS x 3/8"	Angle	Lever	20"	2 1/2" Sure Grip	\$175	\$254	\$370	\$487	\$595
315-X-72-	1/2" IPS x 3/8"	Straight	Cross	20"	2 1/2" Sure Grip	\$197	\$279	\$440	\$537	\$630
315-L-72-	1/2" IPS x 3/8"	Straight	Lever	20"	2 1/2" Sure Grip	\$185	\$264	\$380	\$497	\$605

NEW PRODUCTS

IN MARCH 2023 CATALOG

JACLO®

Confidence from start to finish®

VESSEL SINK DECORATIVE RING

SECTION 6: 61



ITEM	PCH	GRP A	GRP B	GRP C	GRP D
V-RING-	\$85	\$95	\$115	\$125	\$145

- All brass fully polished and plated
- For use as a spacer between vessel sink and countertop

DECORATIVE ROUND LAVATORY TRAP - KNURLED

SECTION 6: 62



Shown: 256-KN-

ITEM	SPECIFICS	PCH	GRP A	GRP B	GRP C	GRP D
255-KN-	1 ¼" Wall Outlet x 1 ¼" Inlet	\$350	\$435	\$545	\$675	\$815
256-KN-	1 ½" Wall Outlet x 1 ¼" Inlet	\$350	\$435	\$545	\$675	\$815

- Decorative round lavatory trap with knurling
- All brass fully polished & plated
- Complements majority of collections
- Extension wall tubes available

BRANCHED TAILPIECE

SECTION 6: 67



ITEM	SPECIFICS	PCH	GRP A	GRP B	GRP C	GRP D
6991-34-	1 ½" Branch Tailpiece	\$87	\$230	\$270	\$290	\$325

- Slip Joint pattern branch tailpiece
- 1 ½" Branch tailpiece with 7/8" O.D. Clamp Connection
- Solid brass nut, fully polished and plated
- **Not available in ULB**

SIDE OUTLET TUB WASTE WITH PIVOT NECK

SECTION 6: 77



ITEM	SPECIFICS	PCH	GRP A	GRP B	GRP C	GRP D
399-3537-	Side Outlet	\$725	\$925	\$1150	\$1295	\$1950

- Neck pivots at ball joint for easy installation
- 20" length from center of shoe
- Heavy 17 gauge brass tubing
- Works with 501/513/512 faceplates and any JACLO lift and turn, or toe control tub drain without overflow (**sold separately**)
- Works with any JACLO 1 ½" coarse thread tub drain trim (**sold separately**)
- Tee can be used with outlet on left or right
- Overflow height & shoe length can be cut to size (if required)
- Faceplate screw extension included

POST EXTENSION

SECTION 6: 91, SECTION 9: 20



ITEM	LIST
2804-XL-POST	\$18

- Post extension for 2802-, 2804-, 2807-
- Allows for a max. extension of 3"

NEW PRODUCTS

IN MARCH 2023 CATALOG

UNIVERSAL 2" CHANNEL DRAIN ADAPTER

SECTION 7: 1 & 9



ITEM

RGH

CD-ADAPTER-RGH

\$30

- Channel Drain Adapter
- **For use with other manufacturers 2" sub drains**
- Internal o-ring for water tight fit when using JACLO Channel Drain base

CHANNEL DRAINS